

# Installation Guide for the NETGEAR 54 Mbps Wireless PC Card WG511



## NETGEAR

NETGEAR, Inc.  
4500 Great America Parkway  
Santa Clara, CA 95054 USA  
Phone 1-888-NETGEAR

M0-WG511NA-0  
February 2003

## Technical Support

Please refer to the support information card that shipped with your product.

By registering your product at [www.NETGEAR.com/register](http://www.NETGEAR.com/register), we can provide you with faster expert technical support and timely notices of product and software upgrades.

NETGEAR, INC.

Support Information

Phone: 1-888-NETGEAR (For US & Canada only)

For other countries see your Support information card.

E-mail: [Support@NETGEAR.com](mailto:Support@NETGEAR.com)

Web site: [www.NETGEAR.com](http://www.NETGEAR.com)

## Statement of Conditions

In the interest of improving internal design, operational function, and/or reliability, NETGEAR reserves the right to make changes to the products described in this document without notice.

NETGEAR does not assume any liability that may occur due to the use or application of the product(s) or circuit layout(s) described herein.

©2002 NETGEAR, Inc. NETGEAR, the Netgear logo, The Gear Guy and Everybody's Connecting are trademarks or registered trademarks of Netgear, Inc. in the United States and/or other countries. Microsoft and Windows are registered trademarks of Microsoft Corporation in the United States and/or other countries. Other brand and product names are trademarks or registered trademarks of their respective holders. Information is subject to change without notice. All rights reserved.

February 2003

## Certificate of the Manufacturer/Importer

It is hereby certified that the Model WG511 Wireless PC Card has been suppressed in accordance with the conditions set out in the BMPT- AmtsblVfg 243/1991 and Vfg 46/1992. The operation of some equipment (for example, test

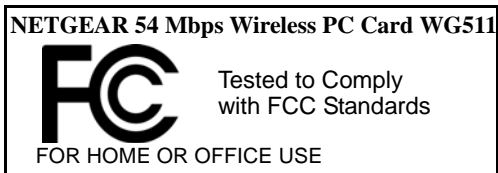
transmitters) in accordance with the regulations may, however, be subject to certain restrictions. Please refer to the notes in the operating instructions.

Federal Office for Telecommunications Approvals has been notified of the placing of this equipment on the market and has been granted the right to test the series for compliance with the regulations.

## VCCI Statement

This equipment is in the Class B category (information equipment to be used in a residential area or an adjacent area thereto) and conforms to the standards set by the Voluntary Control Council for Interference by Data Processing Equipment and Electronic Office Machines aimed at preventing radio interference in such residential areas. When used near a radio or TV receiver, it may become the cause of radio interference. Read instructions for correct handling.

## Federal Communications Commission (FCC) Compliance Notice: Radio Frequency Notice



### Warning!

To comply with the FCC's of exposure requirements you must maintain a distance of at least 1 cm from the antenna of this device while it is in use. This device should not be co-located with other transmitters.

This device complies with part 15 of the FCC Rules. Operation is subject to the following two conditions:

1. This device may not cause harmful interference.
2. This device must accept any interference received, including interference that may cause undesired operation.

**Note:** This equipment has been tested and found to comply with the limits for a Class B digital device, pursuant to part 15 of the FCC Rules. These limits are designed to provide reasonable protection against harmful interference in a residential installation. This equipment generates, uses, and can radiate radio frequency energy and, if not installed and used in accordance with the instructions, may cause harmful interference to radio communications. However, there is no guarantee that interference will not occur in a particular installation. If this equipment does cause harmful interference to radio or television reception, which can be determined by turning the equipment off and on, the user is encouraged to try to correct the interference by one or more of the following measures: (1) Reorient or relocate the receiving antenna, (2) Increase the separation between the equipment and receiver, (3) Connect the equipment into an outlet on a circuit different from that to which the receiver is connected, (4) Consult the dealer or an experienced radio/TV technician for help.

## Federal Communications Commission (FCC) Radiation Exposure Statement

This equipment complies with FCC radiation exposure limits set forth for an uncontrolled environment. In order to avoid the possibility of exceeding the FCC radio frequency exposure limits, human proximity to the antenna shall not be less than 20 cm (8 inches) during normal operation.

## Canadian Department of Communications Radio Interference Regulations

This digital apparatus (Model WG511 Wireless PC Card) does not exceed the Class B limits for radio-noise emissions from digital apparatus as set out in the Radio Interference Regulations of the Canadian Department of Communications.



# Contents

## Chapter 1

### Introduction

About the NETGEAR 54 Mbps Wireless PC Card WG511 .....	1
Key Features and Related NETGEAR Products .....	1
What's in the Box? .....	2
A Road Map for 'How to Get There From Here' .....	3

## Chapter 2

### Basic Setup

What You Will Need Before You Begin .....	7
Verify System Requirements .....	7
Observe Location and Range Guidelines .....	8
Two Basic Operating Modes .....	8
WG511 Default Wireless Configuration Settings .....	9
Basic Installation Instructions .....	10
For Windows XP Users Installing a WG511 .....	10
For Windows 2000 & 98/Me Users Installing a WG511 .....	14
WG511 Wireless Connection Indicators .....	18
Interpreting the LED on the WG511 .....	18
Interpreting System Tray Icon Colors .....	19
Basic Troubleshooting Tips .....	20

## Chapter 3

### Configuration

Understanding the Configuration Options .....	21
Using Configuration Profiles .....	21
Connect to an Access Point in Infrastructure Mode .....	22
How to Configure an Infrastructure Mode Profile .....	23
Connecting to Another PC in Ad-hoc Mode .....	25
How to Configure an Ad-hoc Mode Profile .....	26
Enabling Wireless Security Features .....	28
Identifying the Wireless Network Name (SSID) and WEP Security Settings .....	29
How to Configure WEP Encryption Security .....	30

**Appendix A  
Technical Specifications**

**Appendix B  
Wireless Networking Basics**

Wireless Networking Overview ..... 35

- Infrastructure Mode ..... 35
- Ad Hoc Mode (Peer-to-Peer Workgroup) ..... 36
- Network Name: Extended Service Set Identification (ESSID) ..... 36

Authentication and WEP ..... 36

- 802.11b Authentication ..... 37
- Open System Authentication ..... 37
- Shared Key Authentication ..... 38
- Overview of WEP Parameters ..... 39
- Key Size ..... 40
- WEP Configuration Options ..... 40

Wireless Channels ..... 41

**Appendix C  
Preparing Your PCs for Network Access**

Preparing Your Computers for TCP/IP Networking ..... 43

Configuring Windows 98 and Me for TCP/IP Networking ..... 43

- Install or Verify Windows Networking Components ..... 43
- Enabling DHCP to Automatically Configure TCP/IP Settings in Windows 98 and Me 45
- Selecting Windows' Internet Access Method ..... 47
- Verifying TCP/IP Properties ..... 47

Configuring Windows 2000 or XP for TCP/IP Networking ..... 48

- Install or Verify Windows Networking Components ..... 48
- DHCP Configuration of TCP/IP in Windows XP or 2000 ..... 49
- DHCP Configuration of TCP/IP in Windows XP ..... 49
- DHCP Configuration of TCP/IP in Windows 2000 ..... 51
- Verifying TCP/IP Properties for Windows XP or 2000 ..... 53

**Glossary**

List of Glossary Terms ..... 1

**Index**

# Chapter 1

## Introduction

This chapter introduces the features, package contents, and appearance of the NETGEAR® 54 Mbps Wireless PC Card WG511.

### **About the NETGEAR 54 Mbps Wireless PC Card WG511**

---

The NETGEAR 54 Mbps Wireless PC Card WG511 gives you ultimate mobility in your office or while you are traveling. It frees you from traditional Ethernet wiring and helps you create a wireless network for sharing your broadband cable or DSL Internet access among multiple PCs in and around your home. It is designed for notebook computers running Microsoft® Windows®. It is both 16-bit PCMCIA and 32-bit CardBus compatible and works in any available PCMCIA or CardBus slot.

Its auto-sensing capability allows the highest packet transfer at up to 54 Mbps for maximum throughput or dynamic range shifting to lower speeds due to distance or operating limitations in an environment with a lot of electromagnetic interference.

It provides reliable, standards-based 802.11b 11 Mbps WLAN connectivity that is protected with industry-standard security. In addition, it offers the faster speeds of the soon-to-be ratified 802.11g standard. It works with Windows 98, Me, 2000, and XP operating systems.

### **Key Features and Related NETGEAR Products**

---

The WG511 Wireless PC Card provides the following features:

- Reliable IEEE 802.11b standards-based wireless technology.
- Supports roaming between access points when configured in Infrastructure mode.
- 54 Mbps high speed data transfer. Wireless nodes negotiate to operate in the optimal data transfer rate. In a noisy environment or when the distance between the wireless nodes is far, the wireless nodes automatically fall back to operate at lower transfer rates.

- Highest level of data encryption using 128-bit Shared Key WEP data encryption method. Lower level of data encryption or no data encryption is available to simplify your network setup or to improve data transfer rate.

The following Netgear products can be configured to communicate with the WG511 Wireless PC Card.

- WG602 54 Mbps Wireless Access Point
- WGR614 Wireless Cable/DSL Router
- WAB102 Dual Band Access Point
- WAB501 Dual Band PC Card
- MA101 802.11b Wireless USB Adapter
- ME102 802.11b Wireless Access Point
- MA311 802.11b Wireless PCI Adapter
- MR314 and MR814 802.11b Wireless Cable/DSL Routers
- MA701 802.11b Wireless Compact Flash Card

## **What's in the Box?**

---

The product package should contain the following items:

- NETGEAR 54 Mbps Wireless PC Card WG511
- Installation Guide for the NETGEAR 54 Mbps Wireless PC Card WG511
- *NETGEAR 54 Mbps Wireless PC Card WG511 Resource CD*, including:
  - Driver and Configuration Utility Software
  - Installation Guide for the NETGEAR 54 Mbps Wireless PC Card WG511
- Warranty card
- Support information card

If any of the parts are incorrect, missing, or damaged, contact your NETGEAR dealer. Keep the carton, including the original packing materials, in case you need to return the product for repair.

The NETGEAR 54 Mbps Wireless PC Card WG511 has two interfaces. The PCMCIA Type II connector connects to any notebook PC with an available PCMCIA or CardBus slot. The wireless interface of the NETGEAR 54 Mbps Wireless PC Card WG511 remains outside of the notebook PC chassis when the wireless PC card is inserted into a notebook. The green LED indicates the wireless link condition of the NETGEAR 54 Mbps Wireless PC Card WG511 with another wireless node or the associated access point.



## A Road Map for ‘How to Get There From Here’

The introduction and adoption of any new technology can be a difficult process. Wireless technology has removed one of the barriers to networking: running wires. It allows more people to try networking while at the same time exposes them to the inherent complexity of networking. General networking concepts, set up, and maintenance can be difficult to understand. In addition, wireless technology adds issues, such as range, interference, signal quality, and security to the picture.

To help overcome potential barriers to successfully using wireless networks, the table below identifies how to accomplish such things as connecting to a wireless network, assuring appropriate security measures are taken, browsing the Internet through your wireless connection, exchanging files with other computers and using printers in the combined wireless and wired network.

**Table 1-1. A Road Map for How to Get There From Here ...**

If I Want To ... ?	What Do I Do?	What's Needed?	How Do I?
Connect to a wireless network	<ol style="list-style-type: none"> <li>1. Identify the wireless network name (SSID) and, if used the wireless security settings.</li> <li>2. Set up the NETGEAR 54 Mbps Wireless PC Card WG511 with the settings from step 1.</li> </ol>	<ol style="list-style-type: none"> <li>1. A wireless network</li> <li>2. A notebook PC within the operating range of the wireless network. For guidelines about the range of 802.11b wireless networks, please see <a href="#">2"Observe Location and Range Guidelines" on page 2-8.</a></li> </ol>	<p>To set up the WG511, see <a href="#">Chapter 2, Basic Setup</a> and follow the instructions provided.</p> <p>To learn about wireless networking technology, please see <a href="#">Appendix B-35, "Wireless Networking Basics"</a> for a general introduction.</p>

**Table 1-1. A Road Map for How to Get There From Here ...**

If I Want To ... ?	What Do I Do?	What's Needed?	How Do I?
<p>Protect my wireless connection from snooping, hacking, or information theft.</p>	<ol style="list-style-type: none"> <li>1. Assure that the wireless network has security features enabled.</li> <li>2. Configure my WG511 with the security settings of the wireless network.</li> <li>3. Use Windows security features.</li> </ol>	<ol style="list-style-type: none"> <li>1. A wireless network with authentication and WEP encryption enabled.</li> <li>2. Wireless networking equipment that supports WEP encryption, such as the WG511 and all Netgear wireless networking products.</li> </ol>	<p>To learn about wireless networking security, please see <a href="#">B"Authentication and WEP"</a> on page B-36.</p> <p>To use WEP security features, please see <a href="#">3"Enabling Wireless Security Features"</a> on page 3-28 and configure your WG511 accordingly.</p>
<p><b>Note:</b> Secure Internet sites such as banks and online merchants use encryption security built into browsers like Internet Explorer and Netscape. Any wireless networking security features you might implement are in addition to those already in place on secure Internet sites.</p>			
<p>Connect to the Internet over my wireless network.</p>	<ol style="list-style-type: none"> <li>1. Activate my wireless link and verify my network connection.</li> <li>2. Open an Internet browser such as Internet Explorer or Netscape Navigator.</li> </ol>	<ol style="list-style-type: none"> <li>1. An active Internet connection like those from cable or DSL service providers.</li> <li>2. A wireless network connected to the cable or DSL Internet service through a cable/DSL router as illustrated in <a href="#">3"Connect to an Access Point in Infrastructure Mode"</a> on page 3-22.</li> <li>3. TCP/IP Internet networking software installed and configured on my notebook PC according to the requirements of the Internet service provider</li> <li>4. A browser like Internet Explorer or Netscape Navigator.</li> </ol>	<p>To configure your WG511 in Infrastructure Mode, please see <a href="#">2"Basic Installation Instructions"</a> on page 2-10, and locate the section for your version of Windows.</p> <p>For assistance with configuring the TCP/IP Internet software on a PC, please see <a href="#">C"Preparing Your Computers for TCP/IP Networking"</a> on page C-43 or refer to the PC Networking Tutorial on the <i>NETGEAR 54 Mbps Wireless PC Card WG511 Resource CD</i> and the Help information provided the Windows system you are using.</p>

**Table 1-1. A Road Map for How to Get There From Here ...**

If I Want To ... ?	What Do I Do?	What's Needed?	How Do I?
<p>Exchange files between wirelessly connected notebook computer and other computers in a my combined wireless and wired network.</p>	<ol style="list-style-type: none"> <li>1. Use the Windows Network Neighborhood feature to browser for computers in the combined wireless and wired network.</li> <li>2. Browse the hard drive of the target computer in the network in order to locate the directory or files you want to work with.</li> <li>3. Use the Windows Explorer copy and paste functions to exchange files between the computers.</li> </ol>	<ol style="list-style-type: none"> <li>1. The notebook computer I am using to connect to the wireless network needs to be configured with the Windows Client and File and Print Sharing.</li> <li>2. The notebook computer I am using to connect to the wireless network needs to be configured with the same Windows Workgroup or Domain settings as the other Windows computers in the combined wireless and wired network.</li> <li>3. Any Windows networking security access rights such as login user name/ password that have been assigned in the Windows network or for sharing particular files must be provided when Windows prompts for such information.</li> <li>4. If so-called Windows 'peer' Workgroup networking is being used, the drive, file system directory, or file need to be enabled for sharing.</li> </ol>	<p>For assistance with Windows networking software, please see <a href="#">Appendix C-43, "Preparing Your PCs for Network Access"</a> for configuration scenarios or refer to the Help system included with your version of Windows.</p> <p>Windows Domain settings are usually managed by corporate computer support groups.</p> <p>Windows Workgroup settings are commonly managed by individuals who want to set up small networks in their homes, or small offices.</p> <p>For assistance with setting up Windows networking, refer to the PC Networking Tutorial on the <i>NETGEAR 54 Mbps Wireless PC Card WG511 Resource CD</i> and the Help information provided the Windows system you are using.</p>

**Table 1-1. A Road Map for How to Get There From Here ...**

If I Want To ... ?	What Do I Do?	What's Needed?	How Do I?
<p>Use printers in a combined wireless and wired network.</p>	<ol style="list-style-type: none"> <li>1. Use the Windows Printers and Fax features to locate available printers in the combined wireless and wired network.</li> <li>2. Use the Windows Add a Printer wizard to add access a network printer from the notebook PC you are using to wirelessly connect to the network.</li> <li>3. From the File menu of an application such as Microsoft Word, use the Print Setup feature to direct your print output to the printer in the network.</li> </ol>	<ol style="list-style-type: none"> <li>1. The notebook computer I am using to connect to the wireless network needs to be configured with the Windows Client and File and Print Sharing.</li> <li>2. The notebook computer I am using to connect to the wireless network needs to be configured with the same Windows Workgroup or Domain settings as the other Windows computers in the combined wireless and wired network.</li> <li>3. Any Windows networking security access rights such as login user name/ password that have been assigned in the Windows network must be provided when Windows prompts for such information.</li> <li>4. If so-called Windows 'peer' networking is being used, the printer needs to be enabled for sharing.</li> </ol>	<p>Windows Domain settings are usually managed by corporate computer support groups.</p> <p>Windows Workgroup settings are commonly managed by individuals who want to set up small networks in their homes, or small offices.</p> <p>For assistance with setting up Windows networking, refer to the PC Networking Tutorial on the <i>NETGEAR 54 Mbps Wireless PC Card WG511 Resource CD</i> and the Help information provided the Windows system you are using.</p> <p>For assistance with setting up printers in Windows, refer to the Help and Support information that comes with the version of the Windows operating systems you are using.</p>

# Chapter 2

## Basic Setup

This section describes how to install your NETGEAR 54 Mbps Wireless PC Card WG511 and set up basic wireless connectivity on your Wireless Local Area Network (WLAN). Advanced wireless network configuration is covered in [Chapter 3, Configuration](#) in this manual.



**Note:** Indoors, computers can easily connect to 802.11 wireless networks at distances of several hundred feet. Because walls do not always block wireless signals, others outside your immediate area could access your network. It is important to take appropriate steps to secure your network from unauthorized access. The NETGEAR 54 Mbps Wireless PC Card WG511 provides highly effective security features which are covered in [“Enabling Wireless Security Features” on page 3-28](#) in this manual. Deploy the security features appropriate to your needs.

### What You Will Need Before You Begin

---

You need to verify your computer meets the minimum system requirements and identify the wireless network configuration settings of the WLAN where you will connect before you can configure your wireless pc card and connect.

### Verify System Requirements

Before installing the NETGEAR 54 Mbps Wireless PC Card WG511, please make sure that these minimum requirements have been met:

- You must have a Pentium® Class notebook computer with an available Cardbus slot.
- A CD-ROM drive.
- 5 Mbytes of free hard disk space.
- Some versions of Windows may ask for the original Windows operating system installation files to complete the installation of the WG511 driver software.

## Observe Location and Range Guidelines

Computers can connect over 802.11g wireless networks indoors at a range which vary significantly based on the physical location of the computer with the NETGEAR 54 Mbps Wireless PC Card WG511. For best results, avoid potential sources of interference, such as:

- Large metal surfaces
- Microwaves
- 2.4 GHz Cordless phones

In general, 802.11g wireless devices can communicate through walls. However, if the walls are constructed with concrete, or have metal, or metal mesh, the 802.11g effective range will decrease if such materials are between the devices.

## Two Basic Operating Modes

---

The WG511 Wireless PC Card, like all 802.11b adapters, can operate in the following two basic modes:

- **Infrastructure Mode:** An 802.11 networking framework in which devices and computers communicate with each other by first going through an access point (AP). For example, this mode is used when computers in a house connect to an Access Point that is attached to a router which lets multiple computers share a single Cable or DSL broadband Internet connection.
- **Ad-Hoc Mode:** An 802.11 networking framework in which devices or computers communicate directly with each other, without the use of an AP. For example, Ad-Hoc Mode is used when two Windows computers are configured with file and print sharing enabled and you want to exchange files directly between them.

Both of these configuration options are available with the WG511 Wireless PC Card. Infrastructure configuration procedures for basic network connectivity are covered below. Advanced infrastructure configuration procedures and ad-hoc configuration are covered in [Chapter 3, Configuration](#) of this manual.

## WG511 Default Wireless Configuration Settings

---

If this is a new wireless network installation, use the factory default settings to set up the network and verify wireless connectivity. If this is an addition to an existing wireless network, you will need to identify the wireless configuration and security parameters already defined.

Your NETGEAR 54 Mbps Wireless PC Card WG511 factory default basic settings are:

- Network Name Service Set Identification (SSID): **NETGEAR**  
**Note:** In order for the WG511 Wireless PC Card to communicate with a wireless access point or wireless adapter, all devices must be configured with the same wireless network name (SSID).
- Network Mode (Infrastructure or Ad-hoc): **Infrastructure**
- Data security WEP encryption: **Disabled**

The section below provides instructions for setting up the NETGEAR 54 Mbps Wireless PC Card WG511 for basic wireless connectivity to an access point. The procedures below provide step-by-step installation instructions for Windows PCs. Use the procedure that corresponds to the version of Windows you are using.

## Basic Installation Instructions

Use the procedure below that corresponds to the version of Windows you are using.

### For Windows XP Users Installing a WG511

1

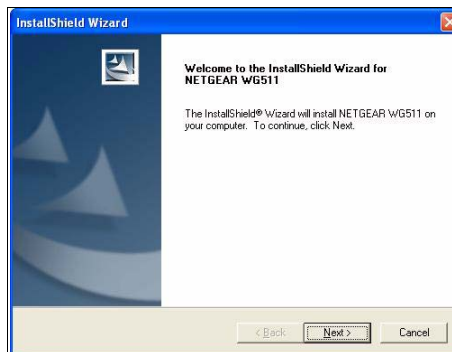
#### Install the WG511 driver and configuration utility software.

- Power on your notebook, let the operating system boot up completely, and log in as needed.
- Insert the Resource CD for the WG511 into your CD-ROM drive. The CD index page shown at the right will load.
- Click the **INSTALL** button and an Install Software window opens. Read the instructions for running the software setup utility.
- Click the Install Software link. When the browser warning message appears, click Open to start the Install Shield Wizard.
- Follow the Install Shield Wizard steps, and click Finish when done to restart your computer.



WG511 Resource CD

**Note:** If this page does not automatically appear, browse the root of the CD and double-click on INDEX.HTM to display this page.



Install Shield Wizard

**Note:** If a Windows XP Certification warning appears, click **Continue Anyway** to proceed.



2

**Install the NETGEAR 54 Mbps Wireless PC Card WG511.**

- a. Locate an available CardBus slot on the side of your notebook. Hold the PC Card with the Netgear logo facing up and insert it into the CardBus slot.

The Found New Hardware Wizard is displayed.

- b. Click **Next** and follow the prompts to proceed.

Click **Continue Anyway** if you are prompted with a Windows XP Logo testing message.

After the installation completes, click **Finish** to close the wizard.

You should see the WG511 system tray icon on the right in the lower right portion of the Windows task bar.

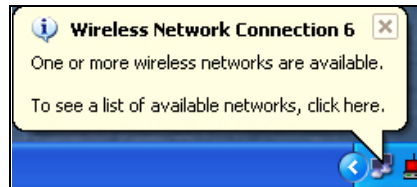
Windows XP will display a Wireless Network Connection message.



Add New Hardware Wizard



WG511 System Tray Icon



Windows XP Network Connection Alert

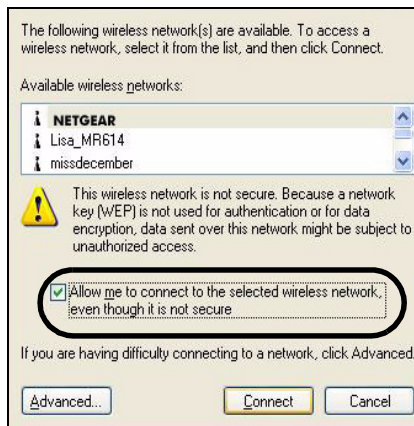
3

**Configure your WG511.**

- a. Right click on the network icon in the Windows XP system tray to open the network options menu.
- b. Click on the View Available Wireless Networks menu item.
- c. If there is more than one wireless network in your vicinity, click on the one to which you will connect.
- d. Click on the “Allow me to connect to the selected wireless network even though this is not secure” check box.
- e. Click Connect.



Right click here to display this menu.




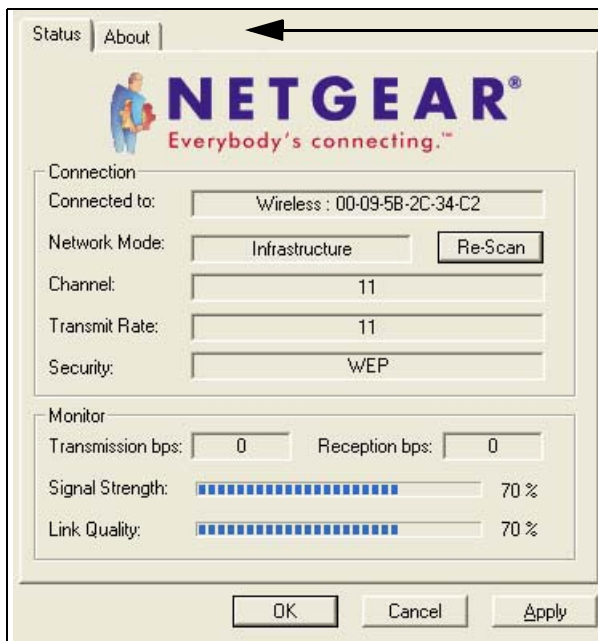
Windows XP Network Connection Alert

**Note:** This procedure assumes your wireless network is not using WEP security. If your wireless network uses WEP, set up your WG511 accordingly. To view WEP settings help, click the Advanced button and click the “Learn about...” link on the Windows XP Local Area Connection Wireless Networks Properties tab page.

4

**Verify wireless connectivity to your network.**

- a. Open the WG511 utility by clicking on the icon  in the Windows system tray.



**Note:** When the Windows XP wireless configuraton utility is enabled (the default), only these two tab pages appear.

To use the full Netgear utility, please see [“Understanding the Configuration Options”](#) on page 3-21.

- b. Verify that your Connection and Status Monitor information matches your wireless network.
- c. Check the two WG511 LEDs:
- Solid green for the LINK LED indicates a good connection. Blinking for the LINK LED indicates attempting to connect. Off for the LINK LED indicates the card is turned off or not fully plugged in.
  - Blinking for the amber transmission LED indicates data transmission.
- d. Verify connectivity to the Internet or network resources.

**Note:** If you are unable to connect, see [“Basic Troubleshooting Tips”](#) on page 2-20.

## For Windows 2000 & 98/Me Users Installing a WG511

1

### Install the WG511 driver and configuration utility software.

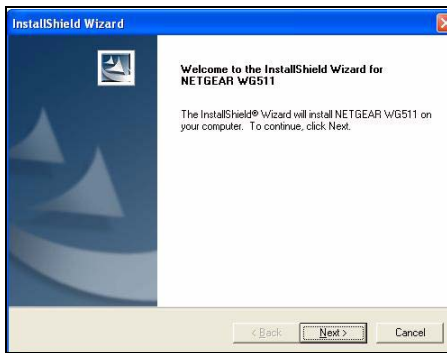
**Note:** Windows 2000, may require you to be logged on with administrator rights.

- Power on your notebook, let the operating system boot up completely, and log in as needed.
- Insert the Resource CD for the WG511 into your CD-ROM drive. The CD index page shown at the right will load.
- Click the INSTALL button and an Install Software window opens. Read the instructions for running the software setup utility.
- Click the Install Software link. When the browser warning message appears, click Open to start the Install Shield Wizard.
- Follow the steps in the Install Shield Wizard, and click Finish when done to restart your computer.



WG511 Resource CD

**Note:** If the Resource CD page does not automatically appear, browse the root directory of the CD and double-click on INDEX.HTM to display this page.



InstallShield Wizard

2

**Install the NETGEAR 54 Mbps Wireless PC Card WG511.**

- a. Locate an available CardBus slot on the side of your notebook. Hold the PC Card with the Netgear logo facing up and insert it into the CardBus slot.

The Found New Hardware Wizard is displayed.

- b. Click **Next** and follow the prompts to proceed. After the installation completes, click **Finish** to close the wizard.

You should see the WG511 system tray icon on the right in the lower right portion of the Windows task bar.



Add New Hardware Wizard

**Note:** If Windows warns about a Digital Signature Not Found, click **Yes** to continue.



WG511 System Tray Icon

**3**

**Configure your WG511 and save the Profile.**

- a. Click on the WG511 systray icon in the to open the WG511 configuration utility.

The WG511 Wireless PC Card configuration utility displays.

- b. Change the Network Name SSID to match your network.

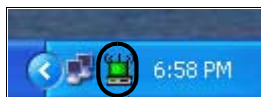
**Tip:** As an alternative to typing in the SSID, you can use the Site Survey tab to view the available wireless networks, choose the one you want, and click the Connect button.

- c. Click the Profile tab. Enter a name for your profile.
- d. Click the Save button to save all your settings in the Profile, and then click the Activate button. You can save multiple profiles and activate whichever one you need to use.

**Tip:** If you use your notebook PC to connect to a wireless network at work and at home, create profiles called **work** and **home**. Then, activate whichever one you need for wherever you are located.

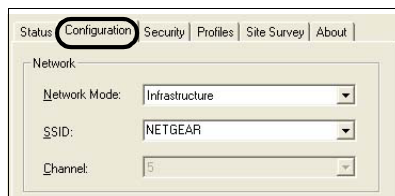
- e. Click OK to close the utility.

**Note:** This procedure assumes you are connecting to a wireless network which is not using WEP security. If your network includes WEP settings, click the Security tab page and configure the WG511 accordingly. For help with these steps, please see [“Enabling Wireless Security Features”](#) on page 3-28 below.



Click here to open the configuration utility.

WG511 system tray icon




WG511 Configuration Utility

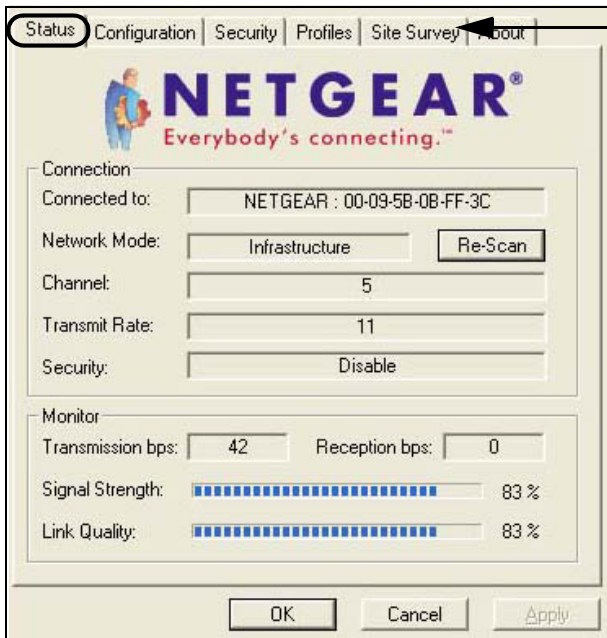
**Note:** The NETGEAR default settings are **Infrastructure mode**, with **NETGEAR** for the wireless network name SSID, and WEP disabled. If your WLAN settings are different from the Netgear default settings, you will not connect. Set up your WG511 accordingly.



4

**Verify wireless connectivity to your network.**

- a. Open the WG511 utility by clicking on the icon  in the Windows system tray.



**Note:** You can use the Site Survey to verify the availability of wireless networks and their SSIDs.

For more on information, please see [“Understanding the Configuration Options”](#) on page 3-21.

- b. Click the Status tab page. Verify that your Connection and Status Monitor information matches your wireless network.
- c. Check the two WG511 LEDs:
- Solid green for the LINK LED indicates a good connection. Blinking for the LINK LED indicates attempting to connect. Off for the LINK LED indicates the card is turned off or not fully plugged in.
  - Blinking for the amber transmission LED indicates data transmission.
- d. Verify connectivity to the Internet or network resources.

**Note:** If you are unable to connect, see [“Basic Troubleshooting Tips”](#) on page 2-20.

## WG511 Wireless Connection Indicators

---

The NETGEAR 54 Mbps Wireless PC Card WG511 provides the following three indicators which give you feedback on the status of your wireless connection:

- The two LEDs on the NETGEAR 54 Mbps Wireless PC Card WG511 indicate the condition of wireless link.
- The color of the SysTray icon is on the System Tray portion of the taskbar in the Microsoft Windows desktop indicates the status of the connection.

### Interpreting the LED on the WG511



**Figure 2-1: WG511 LED**

These LEDs are described below.




**Table 2-1: LED Descriptions**

LED	Activity	Description
LINK -- Green	On	The card is plugged in to the notebook PC.
	Blinking	Blinking indicates the WG511 is trying to establish a connection but is unable to do so.
ACTIVITY -- Amber	On/Blinking	If blinking, the WG511 is has a connection and is transmitting or receiving data.
	Off	There is no wireless network connection.



## Interpreting System Tray Icon Colors

The System Tray (SysTray) resides on one end of the taskbar in the Microsoft Windows desktop.

Color	Condition	Description
<b>Red</b> 	The wireless PC Card has no connection to any other wireless node.	The wireless PC Card is not able to link to any other wireless node or the link is lost. Check your configuration or try moving to a location where the wireless signal quality is better.
<b>Yellow</b> 	The wireless PC Card has a connection with another wireless node.	The wireless link is weak. You may need to move to a better spot, such as closer to the wireless access point. Also, look for possible interference such as a 2.4 GHz cordless phone or large metal surface.
<b>Green</b> 	The wireless PC Card has a connection with another wireless node.	The wireless PC Card has established good communication with an access point and the signal quality is strong.

## Basic Troubleshooting Tips

---

If you have problems connected to your wireless network, try the tips below.

Symptom	Cause	Solution
The PC Card LINK LED is not lit.	The WG511 is not inserted into the slot properly or the WG511 software is not loaded.	Remove and reinsert the WG511. Check the Windows device manager to see if the PC Card is recognized and enabled. Reload the WG511 software, if necessary. Try to install the WG511 in a different CardBus slot on your system if one is available.
The LINK LED is blinking repeatedly.	The WG511 is attempting to connect to access point but cannot connect.	The access point may not be powered on. Or, the access point and the PC card are not configured with the same wireless parameters. Check the SSID and WEP settings.
I can connect to an access point, but I cannot connect to other computers on the network or the Internet.	This could be a physical layer problem or a network configuration problem.	Check to make sure that the access point is physically connected to the Ethernet network. Make sure that the IP addresses and the Windows networking parameters are all configured correctly. Restart the cable or DSL modem, router, access point, and notebook PC.

Also, for problems with accessing network resources, the Windows software might not be installed and configured properly on your computers. Please refer to [Appendix C, "Preparing Your PCs for Network Access"](#) of the Reference Manual on the *NETGEAR 54 Mbps Wireless PC Card WG511 Resource CD*.

# Chapter 3

## Configuration

This section describes how to configure your NETGEAR 54 Mbps Wireless PC Card WG511 for wireless connectivity on your Wireless Local Area Network (WLAN) and use the data security encryption features.



**Note:** The instructions in this section refer to the Netgear WG511 configuration utility. For Windows XP users to use the Netgear configuration utility, you must first disable the Windows XP configuration utility by opening the network connections from the system tray icon, click the Properties button, click the Wireless Networks tab and then uncheck the “Use Windows to configure my wireless network settings” box.

### Understanding the Configuration Options

---

The WG511 configuration utility provides a complete and easy to use set of tools to:

- Configure wireless settings.
- Monitor wireless network connections.
- Save your settings in configuration profiles.

The section below introduces these capabilities of the configuration utility.

### Using Configuration Profiles

---

The WG511 configuration utility uses profiles to store all the configuration settings for a particular wireless network. You can store multiple profiles and recall the one which matches the network you wish to join.

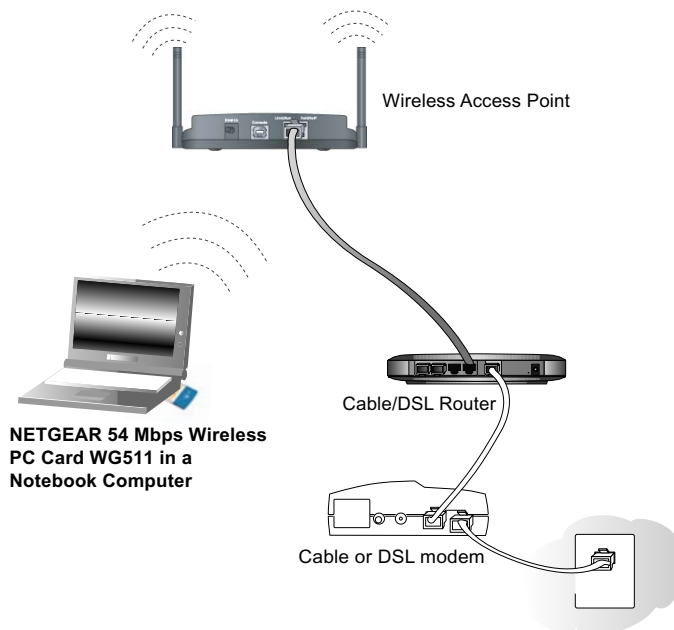
For example, if you use your notebook PC to connect to a wireless network in an office and a wireless network in your home, you can create a profile for each wireless network. Then, you can easily load the profile that has all the configuration settings you need to join the network you are using at the time.

There are two types of wireless network connections you can configure:

- **Infrastructure Mode** -- uses the 802.11 infrastructure mode.
- **Ad-hoc Mode** -- uses the 802.11 ad-hoc mode

For more information of 802.11 wireless network modes, please see [“Wireless Networking Overview”](#) on page B-35 of this manual.

## Connect to an Access Point in Infrastructure Mode




**Figure 3-1: WG511 Wireless PC Card connecting to a wireless access point.**

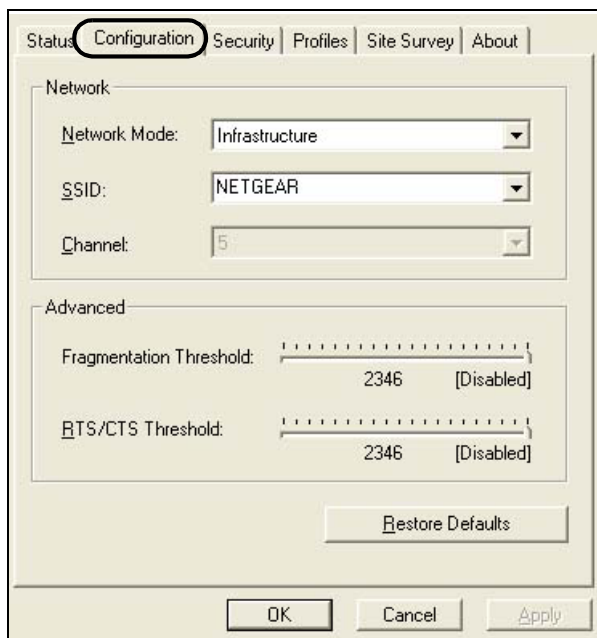
This section provides instructions for configuring the NETGEAR 54 Mbps Wireless PC Card WG511 to connect to a wireless access point.

## How to Configure an Infrastructure Mode Profile

Follow the instructions below to configure an infrastructure mode profile for connecting to an access point.

### 1. Run the WG511 Configuration Utility.

- a. Make sure the WG511 software is installed and the WG511 is fully inserted in an available CardBus slot in your PC.
- b. Open the configuration utility by clicking on the WG511 icon  in the Windows system tray.



**Figure 3-2: Configuration tab page**

- c. Click on the Configuration tab to display the view shown above.

### 2. Configure the wireless Network settings.

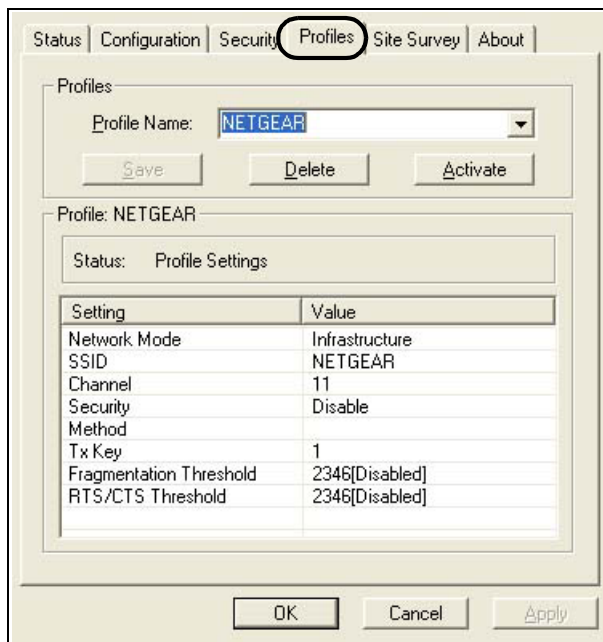
- a. In the Network section, be sure that Infrastructure is selected for the Network Mode.
- b. Enter the SSID. This is also called the Wireless Network Name.

**Note:** You will not get a wireless network connection unless the network SSID matches exactly what is configured in the access point.

**Tip:** You can click the Site Survey tab to view a list of the available wireless networks and their SSIDs at the location where you are.

### 3. Save your settings in a Profile.

- a. Click the Profiles tab to view the screen below.



**Figure 3-3: Profiles tab page**

- b. Type a descriptive name for the Profile Name.
- c. Click the Save button to save this profile. All the configuration settings are saved in this profile.
- d. Click Activate to activate your settings.
- e. Click OK to exit the configuration utility.

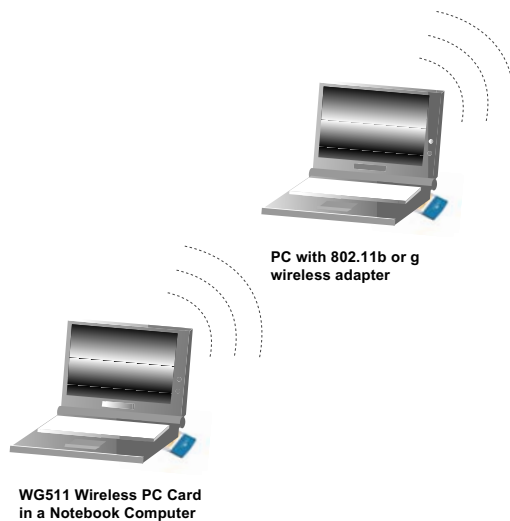
### 4. Verify wireless connectivity to your network.

Verify connectivity by using a browser such as Netscape or Internet Explorer to connect to the Internet, or check for file and printer access on your network.

**Note:** If you cannot connect, please see the [“Basic Troubleshooting Tips”](#) on page 2-20. Also, for problems with accessing network resources, the Windows Client and File and Print Sharing software might not be installed and configured properly on your computers. Please refer to [“Preparing Your Computers for TCP/IP Networking”](#) on page C-43.

## Connecting to Another PC in Ad-hoc Mode

---



**Figure 3-4: NETGEAR WG511 Wireless PC Card in Peer-to-Peer Mode**


The peer-to-peer setting of the WG511 uses Ad-Hoc mode. Ad-Hoc mode is an 802.11 networking framework in which devices or computers communicate directly with each other, without the use of an access point. For example, this mode is used when two Windows computers are configured with file and print sharing enabled and you want to exchange files directly between them.

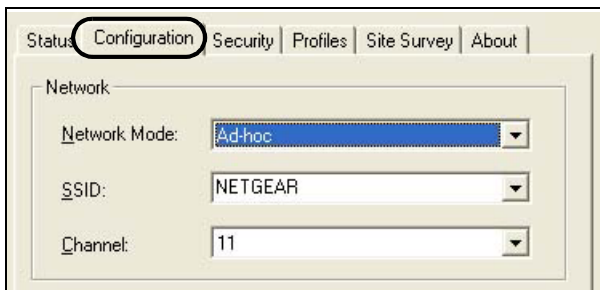
## How to Configure an Ad-hoc Mode Profile

**Note:** Ad-hoc mode will not work using DHCP settings. Ad-hoc mode requires either static IP addresses (such as 192.168.0.1) or other appropriate Windows networking configuration parameters such as adding the IPX protocol support. For instructions on setting up static IP addresses or IPX protocol settings on a Windows PC, please refer to the PC Networking Tutorial included on the *NETGEAR 54 Mbps Wireless PC Card WG511 Resource CD*.

Follow the instructions below to configure an Ad-hoc mode profile.

### 1. Run the WG511 Configuration Utility.

- a. Make sure the WG511 software is installed and the WG511 is fully inserted in an available CardBus slot in your PC.
- b. Open the configuration utility by clicking on the WG511 icon  in the Windows system tray.



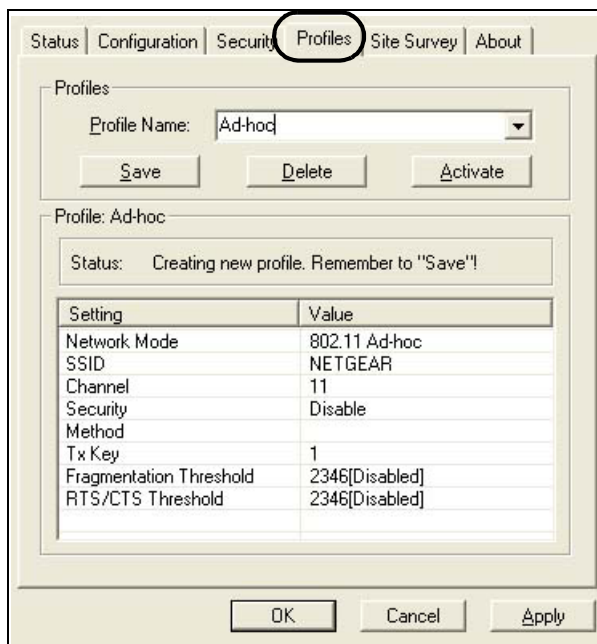
**Figure 3-5: Configuration tab page Ad-hoc mode selected**

- c. Click the Configuration tab to display the view shown above.
- d. Select Ad-hoc from the Network mode drop-down list.
- e. Click Apply to apply your settings

### 2. Save your settings in a Profile.

- a. Click the Profiles tab to view the screen below.





**Figure 3-6: Profiles tab page**

- b. Type a descriptive name for the Profile Name.
- c. Click the Save button to save this profile. All the configuration settings are saved in this profile.
- d. Click Activate to activate your settings.
- e. Click OK to exit the configuration utility.

**3. Configure the PC network settings.**

- a. Configure each PC with either a static IP address or with the IPX protocol.

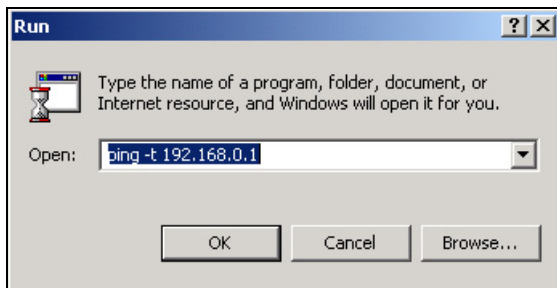
**Note:** For instructions on configuring static IP addresses or the IPX protocol, please refer to the networking tutorial on your *NETGEAR 54 Mbps Wireless PC Card WG511 Resource CD*.

- b. Restart the PCs.

**4. Verify wireless connectivity between your peer devices.**

Verify connectivity by using the Ping.

- a. On the Windows taskbar click the Start button, and then click Run.



- b. Assuming the target PC is configured with 192.168.0.1 as its IP address, type `ping -t 192.168.0.1` and then click OK.
- c. This will cause a continuous ping to be sent to the device with the 192.168.0.1 static IP address. The ping response should change to “reply.”

```
Request timed out.
Request timed out.
Reply from 192.168.0.1: bytes=32 time=40ms TTL=127
Reply from 192.168.0.1: bytes=32 time=41ms TTL=127
Reply from 192.168.0.1: bytes=32 time=30ms TTL=127
```

At this point the connection is established.

**Note:** If you cannot connect, please see the [“Basic Troubleshooting Tips” on page 2-20](#). Also, for problems with accessing network resources, the Windows Client and File and Print Sharing software might not be installed and configured properly on your computers. Please refer to [“Preparing Your Computers for TCP/IP Networking” on page C-43](#).

---

## Enabling Wireless Security Features

---

You can strengthen the security of your wireless connection by enabling Wired Equivalent Privacy (WEP) encryption of the wireless data communications. For more information on 802.11 wireless security, please see [“Authentication and WEP” on page B-36](#).

In addition to the WG511 wireless security features, you should also configure appropriate LAN network security features such as requiring a user name and password to access the shared resources in your network.

The procedures below identify how to configure the WEP encryption settings of your NETGEAR 54 Mbps Wireless PC Card WG511.

## Identifying the Wireless Network Name (SSID) and WEP Security Settings

Print this form, fill in the configuration parameters and put it in a safe place for possible future reference. For an existing wireless network, the person who set up the network will be able to provide this information.

- **Wireless Network Name (SSID):** The Service Set Identification (SSID) identifies the wireless local area network. **NETGEAR** is the default WG511 wireless network name (SSID). You may customize it by using up to 32 alphanumeric characters. Write your customized wireless network name (SSID) on the line below.

**Note:** The SSID in the wireless access point is the SSID you configure in the wireless pc card. For the access point and wireless nodes to communicate with each other, all must be configured with the same SSID.

Wireless network name (SSID): \_\_\_\_\_

- **WEP Security Encryption key:** The default WEP encryption key number is 1, and the default key size is 64 bits.

**Note:** The key number as well as the key value used by all wireless nodes must be the same. If they are different, you will not be able to connect.

WEP Encryption Key Size, circle one: 64 or 128 bits

WEP Encryption Passphrase, if used: \_\_\_\_\_

A Passphrase is used to automatically generate the WEP hexadecimal numbers for the key. If the wireless network Access Point uses a Passphrase, you can also use that here. Otherwise, you will have to manually enter the hexadecimal numbers.

WEP Hexadecimal Numbers: \_\_\_\_\_

The WEP Hexadecimal Numbers are needed if a Passphrase is not used in the wireless network access point but rather if the key is manually entered.


Use the procedures below to configure basic security settings in the WG511.

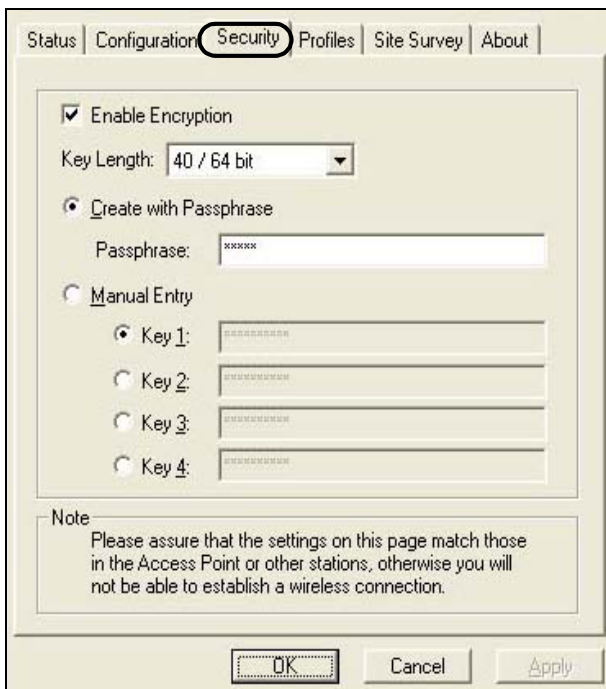
## How to Configure WEP Encryption Security

Following the steps below to perform this procedure.

connecting to an access point.

### 1. Run the WG511 Configuration Utility.

- a. Make sure the WG511 software is installed and the WG511 is fully inserted in an available CardBus slot in your PC.
- b. Open the configuration utility by clicking on the WG511 icon  in the Windows system tray.



**Figure 3-7: Security tab page**

- c. Click on the Configuration tab to display the view shown above.

### 2. Configure the Security settings.

- a. Check the Enable Encryption check box.

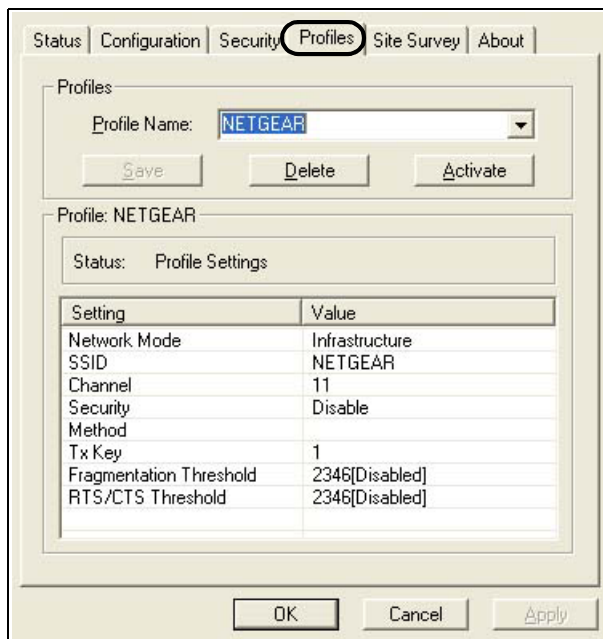
- b. Enter the SSID. This is also called the Wireless Network Name.

**Note:** You will not get a wireless network connection unless the network SSID matches exactly what is configured in the access point.

**Tip:** You can click the Site Survey tab to view a list of the available wireless networks and their SSIDs at the location where you are.

### 3. Save your settings in a Profile.

- a. Click the Profiles tab to view the screen below.



**Figure 3-8: Profiles tab page**

- b. Type a descriptive name for the Profile Name.
  - c. Click the Save button to save this profile. All the configuration settings are saved in this profile.
  - d. Click Activate to activate your settings.
  - e. Click OK to exit the configuration utility.
1. Run the Configuration Utility and select the Encryption tab page.

2. Select the WEP encryption strength you will use. The choices are:

- 64-bit WEP data encryption
- 128-bit WEP data encryption

**Note:** Larger encryption keys require more processing and may slow the communications response times.

3. Check the Create with Passphrase radio button and enter the passphrase. Click Apply and the configuration utility automatically generates the WEP keys.

**Note:** The characters are case sensitive. Be sure to use the same passphrase for all the wireless devices in the network.

If the passphrase method is not available in the other devices, you must manually enter the keys to match exactly what is in the access point and other 802.11b wireless devices.

4. The Default Key setting must match what is set in the access point and the other 802.11 wireless devices.
5. Click Apply then OK for the changes to take effect.

# Appendix A

## Technical Specifications

This appendix provides technical specifications for the NETGEAR 54 Mbps Wireless PC Card WG511.

Antennae	2 Integrated internal diversity antennae
Radio Data Rate	1, 2, 5.5, 6, 9, 12, 18, 24, 36, 48, and 54 Mbps (Auto Rate Sensing)
Frequency	2.4GHz to 2.5GHz CCK and OFDM Modulation)
Power Consumption	3.3V DC, typically 450mA in full Transmit (TX), 300mA in full Receive (RX), and 70mA in power save mode
Emissions	FCC, CE, TELEC
Bus interface	Cardbus
Provided drivers	Microsoft Windows 98, 2000, ME, XP
Dimensions	L: 120mm W: 54 mm H: 7 mm
Weight	40 g
Status LED	Wireless Link
Operating Environment	Operating temperature: 0 to 55 degree C
Safety	US: UL1950
Encryption	40-bit (also called 64-bit) and 128-bit WEP data encryption
Warranty	Limited 3-year warranty





# Appendix B

## Wireless Networking Basics

This chapter provides an overview of Wireless networking.

### Wireless Networking Overview

---

The WG511 Wireless PC Card conforms to the Institute of Electrical and Electronics Engineers (IEEE) 802.11b standard for wireless LANs (WLANs) and a product update will bring the WG511 into conformance to the 802.11g standard when it is ratified. On an 802.11b or g wireless link, data is encoded using direct-sequence spread-spectrum (DSSS) technology and is transmitted in the unlicensed radio spectrum at 2.5GHz. The maximum data rate for the wireless link is 11 Mbps, but it will automatically back down from 11 Mbps to 5.5, 2, and 1 Mbps when the radio signal is weak or when interference is detected. The 802.11g auto rate sensing rates are 1, 2, 5.5, 6, 9, 12, 18, 24, 36, 48, and 54 Mbps.

The 802.11 standard is also called Wireless Ethernet or Wi-Fi by the Wireless Ethernet Compatibility Alliance (WECA, see <http://www.wi-fi.net>), an industry standard group promoting interoperability among 802.11 devices. The 802.11 standard offers two methods for configuring a wireless network - ad hoc and infrastructure.

### Infrastructure Mode

With a wireless Access Point, you can operate the wireless LAN in the infrastructure mode. This mode provides wireless connectivity to multiple wireless network devices within a fixed range or area of coverage, interacting with wireless nodes via an antenna.

In the infrastructure mode, the wireless access point converts airwave data into wired Ethernet data, acting as a bridge between the wired LAN and wireless clients. Connecting multiple Access Points via a wired Ethernet backbone can further extend the wireless network coverage. As a mobile computing device moves out of the range of one access point, it moves into the range of another. As a result, wireless clients can freely roam from one Access Point domain to another and still maintain seamless network connection.

## Ad Hoc Mode (Peer-to-Peer Workgroup)

In an ad hoc network, computers are brought together as needed; thus, there is no structure or fixed points to the network - each node can generally communicate with any other node. There is no Access Point involved in this configuration. This mode enables you to quickly set up a small wireless workgroup and allows workgroup members to exchange data or share printers as supported by Microsoft networking in the various Windows operating systems. Some vendors also refer to ad hoc networking as peer-to-peer group networking.

In this configuration, network packets are directly sent and received by the intended transmitting and receiving stations. As long as the stations are within range of one another, this is the easiest and least expensive way to set up a wireless network.

## Network Name: Extended Service Set Identification (ESSID)

The Extended Service Set Identification (ESSID) is one of two types of Service Set Identification (SSID). In an ad hoc wireless network with no access points, the Basic Service Set Identification (BSSID) is used. In an infrastructure wireless network that includes an access point, the ESSID is used, but may still be referred to as SSID.

An SSID is a thirty-two character (maximum) alphanumeric key identifying the name of the wireless local area network. Some vendors refer to the SSID as network name. For the wireless devices in a network to communicate with each other, all devices must be configured with the same SSID.

## Authentication and WEP

---

The absence of a physical connection between nodes makes the wireless links vulnerable to eavesdropping and information theft. To provide a certain level of security, the IEEE 802.11 standard has defined two types of authentication methods, Open System and Shared Key. With Open System authentication, a wireless PC can join any network and receive any messages that are not encrypted. With Shared Key authentication, only those PCs that possess the correct authentication key can join the network. By default, IEEE 802.11 wireless devices operate in an Open System network.

Wired Equivalent Privacy (WEP) data encryption is used when the wireless devices are configured to operate in Shared Key authentication mode. There are two shared key methods implemented in most commercially available products, 64-bit and 128-bit WEP data encryption.

## **802.11 Authentication**

The 802.11 standard defines several services that govern how two 802.11 devices communicate. The following events must occur before an 802.11 Station can communicate with an Ethernet network through an access point such as the one built in to the WG511:

1. Turn on the wireless station.
2. The station listens for messages from any access points that are in range.
3. The station finds a message from an access point that has a matching SSID.
4. The station sends an authentication request to the access point.
5. The access point authenticates the station.
6. The station sends an association request to the access point.
7. The access point associates with the station.
8. The station can now communicate with the Ethernet network through the access point.

An access point must authenticate a station before the station can associate with the access point or communicate with the network. The IEEE 802.11 standard defines two types of authentication: Open System and Shared Key.

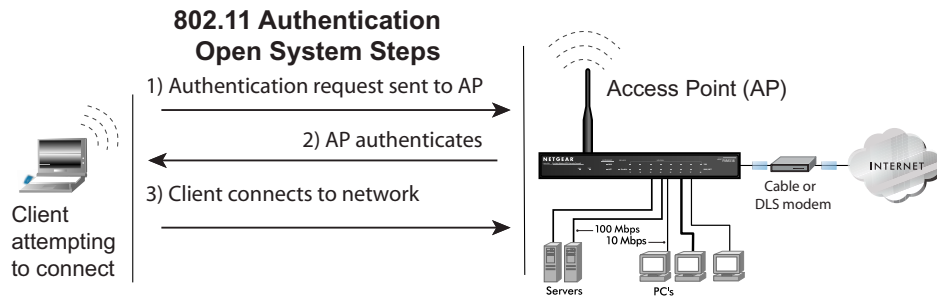
- Open System Authentication allows any device to join the network, assuming that the device SSID matches the access point SSID. Alternatively, the device can use the “ANY” SSID option to associate with any available Access Point within range, regardless of its SSID.
- Shared Key Authentication requires that the station and the access point have the same WEP Key to authenticate. These two authentication procedures are described below.

## **Open System Authentication**

The following steps occur when two devices use Open System Authentication:

1. The station sends an authentication request to the access point.
2. The access point authenticates the station.
3. The station associates with the access point and joins the network.

This process is illustrated in below.



**Figure 3-9: 802.11 open system authentication**

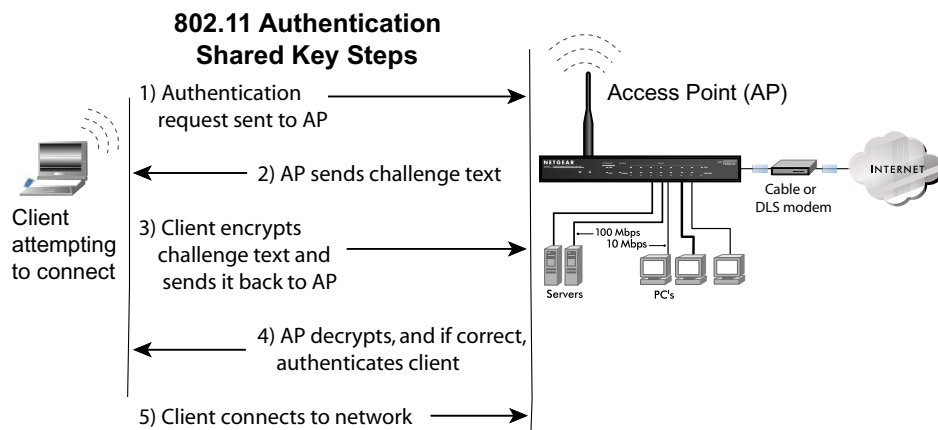
## Shared Key Authentication

The following steps occur when two devices use Shared Key Authentication:

1. The station sends an authentication request to the access point.
2. The access point sends challenge text to the station.
3. The station uses its configured 64-bit or 128-bit default key to encrypt the challenge text, and sends the encrypted text to the access point.
4. The access point decrypts the encrypted text using its configured WEP Key that corresponds to the station's default key. The access point compares the decrypted text with the original challenge text. If the decrypted text matches the original challenge text, then the access point and the station share the same WEP Key and the access point authenticates the station.
5. The station connects to the network.

If the decrypted text does not match the original challenge text (i.e., the access point and station do not share the same WEP Key), then the access point will refuse to authenticate the station and the station will be unable to communicate with either the 802.11 network or Ethernet network.

This process is illustrated in below.



**Figure 3-10: 802.11 shared key authentication**

## Overview of WEP Parameters

Before enabling WEP on an 802.11 network, you must first consider what type of encryption you require and the key size you want to use. Typically, there are three WEP Encryption options available for 802.11 products:

1. **Do Not Use WEP:** The 802.11 network does not encrypt data. For authentication purposes, the network uses Open System Authentication.
2. **Use WEP for Encryption:** A transmitting 802.11 device encrypts the data portion of every packet it sends using a configured WEP Key. The receiving 802.11b device decrypts the data using the same WEP Key. For authentication purposes, the 802.11b network uses Open System Authentication.
3. **Use WEP for Authentication and Encryption:** A transmitting 802.11 device encrypts the data portion of every packet it sends using a configured WEP Key. The receiving 802.11 device decrypts the data using the same WEP Key. For authentication purposes, the 802.11 network uses Shared Key Authentication.

**Note:** Some 802.11 access points also support **Use WEP for Authentication Only** (Shared Key Authentication without data encryption).

## Key Size

The IEEE 802.11 standard supports two types of WEP encryption: 40-bit and 128-bit.

The 64-bit WEP data encryption method, allows for a five-character (40-bit) input. Additionally, 24 factory-set bits are added to the forty-bit input to generate a 64-bit encryption key. (The 24 factory-set bits are not user-configurable). This encryption key will be used to encrypt/decrypt all data transmitted via the wireless interface. Some vendors refer to the 64-bit WEP data encryption as 40-bit WEP data encryption since the user-configurable portion of the encryption key is 40 bits wide.

The 128-bit WEP data encryption method consists of 104 user-configurable bits. Similar to the forty-bit WEP data encryption method, the remaining 24 bits are factory set and not user configurable. Some vendors allow passphrases to be entered instead of the cryptic hexadecimal characters to ease encryption key entry.

128-bit encryption is stronger than 40-bit encryption, but 128-bit encryption may not be available outside of the United States due to U.S. export regulations.

When configured for 40-bit encryption, 802.11 products typically support up to four WEP Keys. Each 40-bit WEP Key is expressed as 5 sets of two hexadecimal digits (0-9 and A-F). For example, “12 34 56 78 90” is a 40-bit WEP Key.

When configured for 128-bit encryption, 802.11b products typically support four WEP Keys but some manufacturers support only one 128-bit key. The 128-bit WEP Key is expressed as 13 sets of two hexadecimal digits (0-9 and A-F). For example, “12 34 56 78 90 AB CD EF 12 34 56 78 90” is a 128-bit WEP Key.

**Note:** Typically, 802.11 access points can store up to four 128-bit WEP Keys but some 802.11 client adapters can only store one. Therefore, make sure that your 802.11 access and client adapters configurations match.

## WEP Configuration Options

The WEP settings must match on all 802.11 devices that are within the same wireless network as identified by the SSID. In general, if your mobile clients will roam between access points, then all of the 802.11 access points and all of the 802.11 client adapters on the network must have the same WEP settings.

**Note:** Whatever keys you enter for an AP, you must also enter the same keys for the client adapter in the same order. In other words, WEP key 1 on the AP must match WEP key 1 on the client adapter, WEP key 2 on the AP must match WEP key 2 on the client adapter, etc.

**Note:** The AP and the client adapters can have different default WEP Keys as long as the keys are in the same order. In other words, the AP can use WEP key 2 as its default key to transmit while a client adapter can use WEP key 3 as its default key to transmit. The two devices will communicate as long as the AP's WEP key 2 is the same as the client's WEP key 2 and the AP's WEP key 3 is the same as the client's WEP key 3.

## **Wireless Channels**

---

IEEE 802.11b and g wireless nodes communicate with each other using radio frequency signals in the ISM (Industrial, Scientific, and Medical) band between 2.4 GHz and 2.5 GHz. Neighboring channels are 5 MHz apart. However, due to spread spectrum effect of the signals, a node sending signals using a particular channel will utilize frequency spectrum 12.5 MHz above and below the center channel frequency. As a result, two separate wireless networks using neighboring channels (for example, channel 1 and channel 2) in the same general vicinity will interfere with each other. Applying two channels that allow the maximum channel separation will decrease the amount of channel cross-talk, and provide a noticeable performance increase over networks with minimal channel separation.

The radio frequency channels used are listed in [Table 3-1](#):

**Table 3-1. 802.11b and g Radio Frequency Channels**

Channel	Center Frequency	Frequency Spread
1	2412 MHz	2399.5 MHz - 2424.5 MHz
2	2417 MHz	2404.5 MHz - 2429.5 MHz
3	2422 MHz	2409.5 MHz - 2434.5 MHz
4	2427 MHz	2414.5 MHz - 2439.5 MHz
5	2432 MHz	2419.5 MHz - 2444.5 MHz
6	2437 MHz	2424.5 MHz - 2449.5 MHz
7	2442 MHz	2429.5 MHz - 2454.5 MHz
8	2447 MHz	2434.5 MHz - 2459.5 MHz
9	2452 MHz	2439.5 MHz - 2464.5 MHz
10	2457 MHz	2444.5 MHz - 2469.5 MHz
11	2462 MHz	2449.5 MHz - 2474.5 MHz
12	2467 MHz	2454.5 MHz - 2479.5 MHz
13	2472 MHz	2459.5 MHz - 2484.5 MHz

**Note:** The available channels supported by the wireless products in various countries are different.

The preferred channel separation between the channels in neighboring wireless networks is 25 MHz (5 channels). This means that you can apply up to three different channels within your wireless network. There are only 11 usable wireless channels in the United States. It is recommended that you start using channel 1 and grow to use channel 6, and 11 when necessary, as these three channels do not overlap.



# Appendix C

## Preparing Your PCs for Network Access

This appendix describes how to prepare your PCs to connect to the Internet through the NETGEAR 54 Mbps Wireless PC Card WG511.

For adding file and print sharing to your network, please consult the Windows help information included with the version of Windows installed on each computer on your network.

### Preparing Your Computers for TCP/IP Networking

---

Computers access the Internet using a protocol called TCP/IP (Transmission Control Protocol/Internet Protocol). Each computer on your network must have TCP/IP installed and selected as its networking protocol. If a Network Interface Card (NIC) is already installed in your PC, then TCP/IP is probably already installed as well.

Most operating systems include the software components you need for networking with TCP/IP. Windows 95 or later includes the software components for establishing a TCP/IP network.

In your TCP/IP network, each PC and the wireless access point must be assigned a unique IP addresses. Each PC must also have certain other TCP/IP configuration information such as a subnet mask (netmask), a domain name server (DNS) address, and a default gateway address. In most cases, you should install TCP/IP so that the PC obtains its specific network configuration information automatically from a DHCP server during startup.

### Configuring Windows 98 and Me for TCP/IP Networking

---

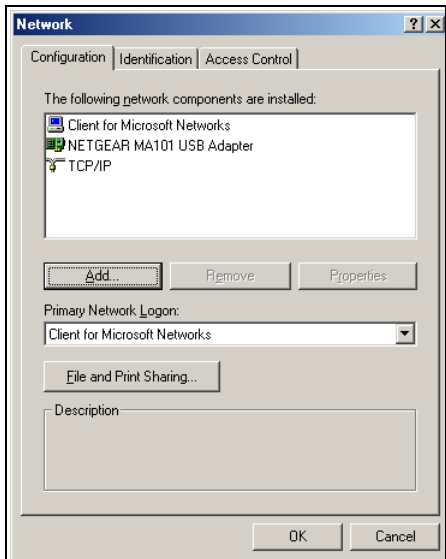
As part of the PC preparation process, you may need to install and configure TCP/IP on your PC. Before starting, locate your Windows CD; you may need to insert it during the TCP/IP installation process.

### Install or Verify Windows Networking Components

To install or verify the necessary components for IP networking:

1. On the Windows taskbar, click the Start button, point to Settings, and then click Control Panel.
2. Double-click the Network icon.

The Network window opens, which displays a list of installed components:



You must have an Ethernet adapter or an WG511, the TCP/IP protocol, and the Client for Microsoft Networks.



**Note:** It is not necessary to remove any other network components shown in the Network window in order to install the adapter, TCP/IP, or Client for Microsoft Networks.

If you need to add TCP/IP:

- a. Click the Add button.
- b. Select Protocol, and then click Add.
- c. Select Microsoft.
- d. Select TCP/IP, and then click OK.

If you need to add the Client for Microsoft Networks:

- a. Click the Add button.
- b. Select Client, and then click Add.
- c. Select Microsoft.
- d. Select Client for Microsoft Networks, and then click OK.

If you need to add File and Print Sharing for Microsoft Networks:

- a. Click the Add button.
  - b. Select Client, and then click Add.
  - c. Select Microsoft.
  - d. Select File and Print Sharing for Microsoft Networks, and then click OK.
3. Restart your PC for the changes to take effect.

## Enabling DHCP to Automatically Configure TCP/IP Settings in Windows 98 and Me

After the TCP/IP protocol components are installed, each PC must be assigned specific information about itself and resources that are available on its network. The simplest way to configure this information is to allow the PC to obtain the information from a DHCP server in the network.

You will find there are many similarities in the procedures for different Windows systems when using DHCP to configure TCP/IP.

The following steps will walk you through the configuration process for each of these versions of Windows.

**1**

Locate your **Network Neighborhood** icon.

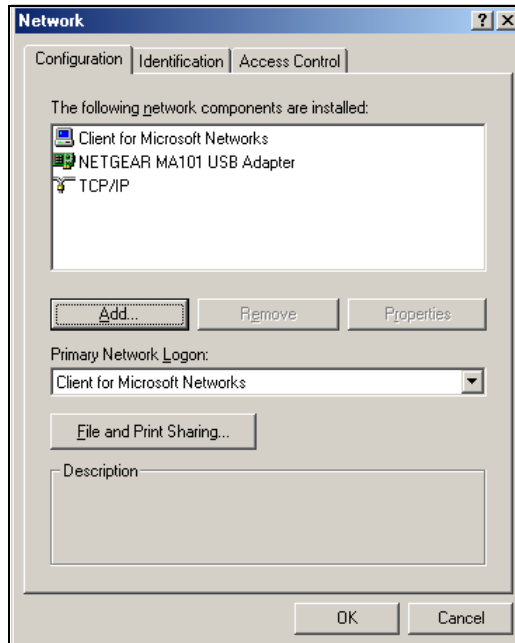
- If the Network Neighborhood icon is on the Windows desktop, position your mouse pointer over it and right-click your mouse button.
- If the icon is not on the desktop,
  - Click **Start** on the task bar located at the bottom left of the window.
  - Choose **Settings**, and then **Control Panel**.
  - Locate the **Network Neighborhood** icon and click on it. This will open the Network panel as shown below.

2

Verify the following settings as shown:

- Client for Microsoft Network exists
- Ethernet adapter is present
- TCP/IP is present
- **Primary Network Logon** is set to Windows logon

Click on the **Properties** button. The following TCP/IP Properties window will display.



3

By default, the **IP Address** tab is open on this window.

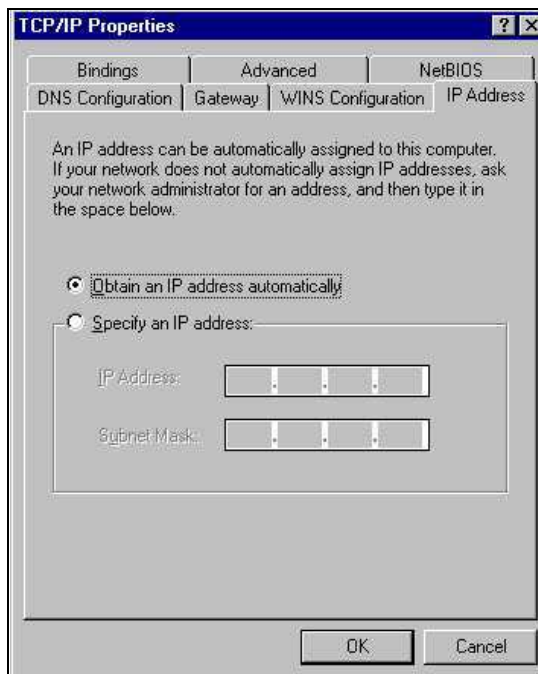
- Verify the following:

**Obtain an IP address automatically** is selected. If not selected, click in the radio button to the left of it to select it. This setting is required to enable the DHCP server to automatically assign an IP address.

- Click **OK** to continue.

Restart the PC.

Repeat these steps for each PC with this version of Windows on your network.



## Selecting Windows' Internet Access Method

1. On the Windows taskbar, click the Start button, point to Settings, and then click Control Panel.
2. Double-click the Internet Options icon.
3. Select "I want to set up my Internet connection manually" or "I want to connect through a Local Area Network" and click Next.
4. Select "I want to connect through a Local Area Network" and click Next.
5. Uncheck all boxes in the LAN Internet Configuration screen and click Next.
6. Proceed to the end of the Wizard.

## Verifying TCP/IP Properties

After your PC is configured and has rebooted, you can check the TCP/IP configuration using the utility *wiipcfg.exe*:

1. On the Windows taskbar, click the Start button, and then click Run.

2. Type **winipcfg**, and then click OK.

The IP Configuration window opens, which lists (among other things), your IP address, subnet mask, and default gateway.

3. From the drop-down box, select your Ethernet adapter.

The window is updated to show your settings, which should match the values below if you are using the default TCP/IP settings that NETGEAR recommends for connecting through a router or gateway:

- The IP address is between 192.168.0.2 and 192.168.0.254
- The subnet mask is 255.255.255.0
- The default gateway is 192.168.0.1

## **Configuring Windows 2000 or XP for TCP/IP Networking**

---

As part of the PC preparation process, you may need to install and configure TCP/IP on each networked PC. Before starting, locate your Windows CD; you may need to insert it during the TCP/IP installation process.

### **Install or Verify Windows Networking Components**

To install or verify the necessary components for IP networking:

1. On the Windows taskbar, click the Start button, point to Settings, and then click Control Panel.
2. Double-click the Network and Dialup Connections icon.
3. If an Ethernet adapter is present in your PC, you should see an entry for Local Area Connection. Double-click that entry.
4. Select Properties.
5. Verify that 'Client for Microsoft Networks' and 'Internet Protocol (TCP/IP)' are present. If not, select Install and add them.
6. Select 'Internet Protocol (TCP/IP)', click Properties, and verify that "Obtain an IP address automatically is selected.
7. Click OK and close all Network and Dialup Connections windows.
8. Then, restart your PC.

## DHCP Configuration of TCP/IP in Windows XP or 2000

You will find there are many similarities in the procedures for different Windows systems when using DHCP to configure TCP/IP.

The following steps will walk you through the configuration process for each of these versions of Windows.

## DHCP Configuration of TCP/IP in Windows XP

1

Locate your **Network Neighborhood** icon.

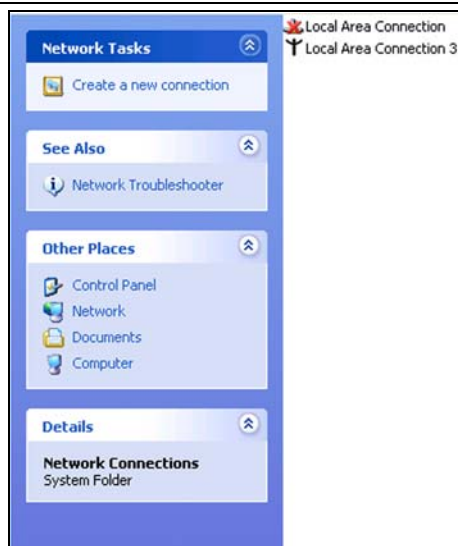
- Select **Control Panel** from the Windows XP Start Menu.
- Select the **Network Connections** icon on the Control Panel. This will take you to the next step.

2

Now the Network Connection window displays.

The Connections List that shows all the network connections set up on the PC, located to the right of the window.

- Right-click on the **Connection with the wireless icon** and choose **Status**.

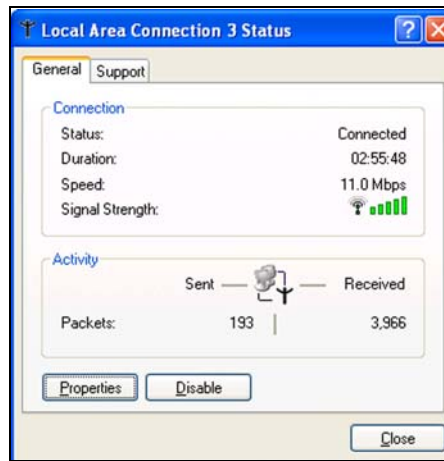


3

Now you should be at the Local Area Network Connection Status window. This box displays the connection status, duration, speed, and activity statistics.

Administrator logon access rights are needed to use this window.

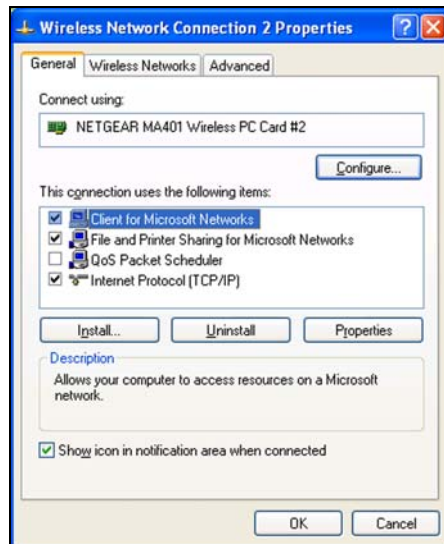
- Click the **Properties** button to view details about the connection.



4

The TCP/IP details are presented on the Support tab page.

- Select **Internet Protocol**, and click **Properties** to view the configuration information.





Verify that **Obtain an IP address**

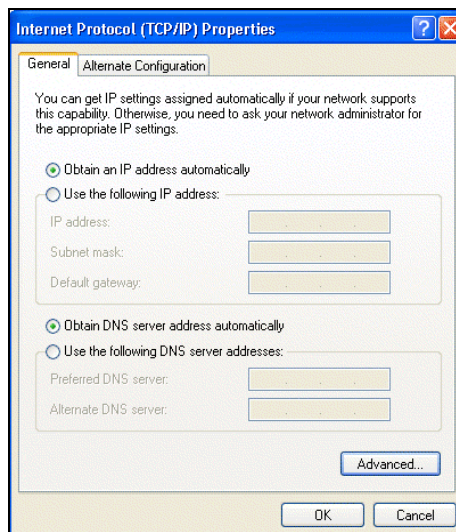
**5**

**automatically** radio button is selected and that the **Obtain DNS server address automatically** radio button is selected.

- Click the **OK** button.

This completes the DHCP configuration in Windows XP.

Repeat these steps for each PC with this version of Windows on your network.



## DHCP Configuration of TCP/IP in Windows 2000

After you install a network card, TCP/IP for Windows 2000 is configured and set to DHCP without your having to configure it. However, if there are problems, following the steps below to configure TCP/IP with DHCP for Windows 2000.

**1**

Click on the **My Network Places** icon on the Windows desktop. This will bring up a window called Network and Dial-up Connections.

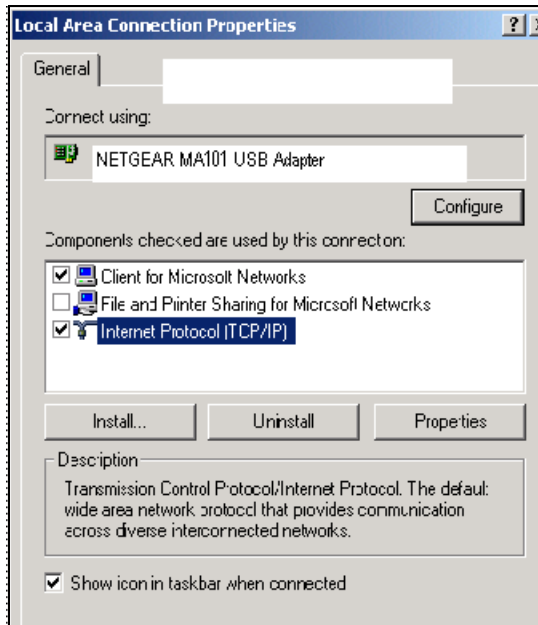
- Right click on **Local Area Connection** and select **Properties**.

2

The **Local Area Connection Properties** dialog box appears. Verify that you have the correct Ethernet card selected in the **Connect using:** box and that the following two items are displayed and selected in the box of “Components checked are used by this connection:”

- Client for Microsoft Networks and
- Internet Protocol (TCP/IP)

Click **OK**.



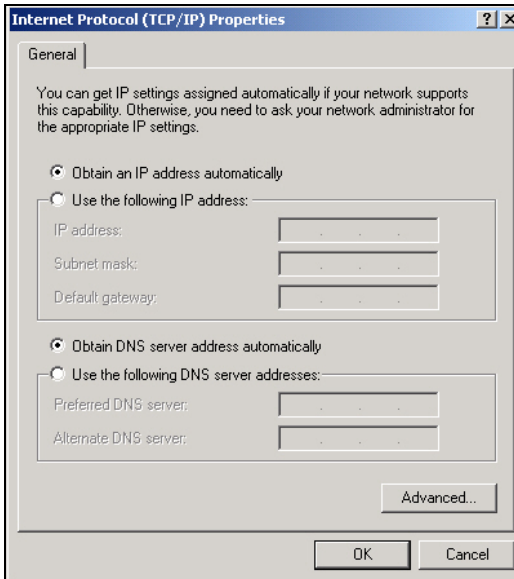
3

With Internet Protocol (TCP/IP) selected, click on **Properties** to open the Internet Protocol (TCP/IP) Properties dialogue box. Verify that

- **Obtain an IP address automatically** is selected.
- **Obtain DNS server address automatically** is selected.

Click **OK** to return to Local Area Connection Properties. Click **OK** again to complete the configuration process.

Restart the PC. Repeat these steps for each PC with this version of Windows on your network.



## Verifying TCP/IP Properties for Windows XP or 2000

To check your PC's TCP/IP configuration:

1. On the Windows taskbar, click the Start button, and then click Run.

The Run window opens.

2. Type `cmd` and then click OK.

A command window opens

3. Type `ipconfig /all`

Your IP Configuration information will be listed, and should match the values below if you are using the default TCP/IP settings that NETGEAR recommends for connecting through a router or gateway:

- The IP address is between 192.168.0.2 and 192.168.0.254
- The subnet mask is 255.255.255.0
- The default gateway is 192.168.0.1

4. Type `exit`



## List of Glossary Terms

---

Use the list below to find definitions for technical terms used in this manual.

<b>802.11b</b>	IEEE specification for wireless networking at 11 Mbps using direct-sequence spread-spectrum (DSSS) technology and operating in the unlicensed radio spectrum at 2.5GHz.
<b>DHCP</b>	<i>See</i> Dynamic Host Configuration Protocol.
<b>Dynamic Host Configuration Protocol</b>	DHCP. An Ethernet protocol specifying how a centralized DHCP server can assign network configuration information to multiple DHCP clients. The assigned information includes IP addresses, DNS addresses, and gateway (router) addresses.
<b>Gateway</b>	A local device, usually a router, that connects hosts on a local network to other networks.
<b>IP</b>	<i>See</i> Internet Protocol.
<b>IP Address</b>	A four-byte number uniquely defining each host on the Internet. Ranges of addresses are assigned by Internic, an organization formed for this purpose. Usually written in dotted-decimal notation with periods separating the bytes (for example, 134.177.244.57).
<b>ISP</b>	Internet service provider.
<b>Internet Protocol</b>	The main internetworking protocol used in the Internet. Used in conjunction with the Transfer Control Protocol (TCP) to form TCP/IP.
<b>LAN</b>	<i>See</i> local area network.
<b>local area network</b>	LAN. A communications network serving users within a limited area, such as one floor of a building. A LAN typically connects multiple personal computers and shared network devices such as storage and printers. Although many technologies exist to implement a LAN, Ethernet is the most common for connecting personal computers.

<b>MAC address</b>	Media Access Control address. A unique 48-bit hardware address assigned to every Ethernet node. Usually written in the form 01:23:45:67:89:ab.
<b>Mbps</b>	Megabits per second.
<b>packet</b>	A block of information sent over a network. A packet typically contains a source and destination network address, some protocol and length information, a block of data, and a checksum.
<b>router</b>	A device that forwards data between networks. An IP router forwards data based on IP source and destination addresses.
<b>Routing Information Protocol</b>	A protocol in which routers periodically exchange information with one another so that they can determine minimum distance paths between sources and destinations.
<b>subnet mask</b>	<i>See</i> netmask.
<b>UTP</b>	Unshielded twisted pair. The cable used by 10BASE-T and 100BASE-Tx Ethernet networks.
<b>WAN</b>	<i>See</i> wide area network.
<b>WEP</b>	Wired Equivalent Privacy. WEP is a data encryption protocol for 802.11b wireless networks. All wireless nodes and access points on the network are configured with a 64-bit or 128-bit Shared Key for data encryption.
<b>wide area network</b>	WAN. A long distance link used to extend or connect remotely located local area networks. The Internet is a large WAN.

## Numerics

802.11b B-35

## A

ad-hoc mode B-36

## B

BSSID B-36

## E

ESSID B-36

## F

features 1-1

## I

infrastructure mode B-36

IP networking  
for Windows C-43, C-48

## L

LEDs  
description 2-18

## O

Open System authentication B-36

## S

Shared Key authentication B-36  
SSID 1-3, 2-9, B-36

## T

TCP/IP properties  
verifying for Windows C-47

## W

WEP 1-4, 3-28, B-36

Wi-Fi B-35

Windows, configuring for IP routing C-43, C-48

winipcfg utility C-47

Wired Equivalent Privacy. *See* WEP

Wireless Ethernet B-35

wireless network name 1-3